



JULIA
CAMPER

BIG SUR 4x4









BIG SUR 4x4





BEAUTY AND THE BEAST

The powerful Big Sur will allow you to reach the most remote destinations without any issue.

The numerous quality features do not take anything away from the robustness of this vehicle. You will fall in love with its excellent design and equipment.

Customize it to your needs and choose from our many optional accessories.





BIG SUR 4x4

HIGH CLASS

The outstanding Big Sur offers a balanced space without giving anything up. A spacious living room, a modular table, stylish upholstery; you can choose between eco-leather, sports fabric or if you wish, our artisans can offer other multiple options.

Its soft tones combined with its elegant lighting will make you feel at home. The Truma combi Diesel heating system guarantees both your safety in any weather and maximum autonomy in any location.

The windows come with double glazing and solar treatment, all the details are designed to offer the best in its category.

The ergonomic seating allows for numerous positions. Isofix at the rear comes as standard. As an option you can request heated seating too.











ENJOY!

The spacious kitchen provided in the Big Sur 4x4 will allow you to prepare your most exquisite recipes wherever you are. It is equipped with two gas-burners, an integrated sink with a glass lid and an elegant 90-liters compressor fridge which will not be affected by rising outside temperatures. The practicality of its location allows it to be used also from the outside. To increase your autonomy, it is also powered through a high-power solar panel as standard.

All drawers are fitted with soft close mechanisms and with superior quality drawer guides.

The multipurpose extension table allows you to increase the kitchen space or it can be used as an outdoor table to enjoy your aperitif in the shade of our optional outdoor awning.

Experience maximum autonomy, the Big Sur 4x4 is fitted with a 160 liters sanitary water deposit. Refueling distances are never a problem on impossible journeys.



FEEL AT HOME

The bathroom has all the necessary built-in functions, your campervan experience will live up to your high expectations. Its compact and practical layout does not diminish its functionality, our design ensures maximum efficiency of the vehicle.

This includes an overhead storage cupboard, a sink with a pull-out shower head, a high-quality toilet with a removable drawer on the outside and with pressurized sanitary water.

Our smart waterproof bathroom sliding door guarantees maximum space efficiency.

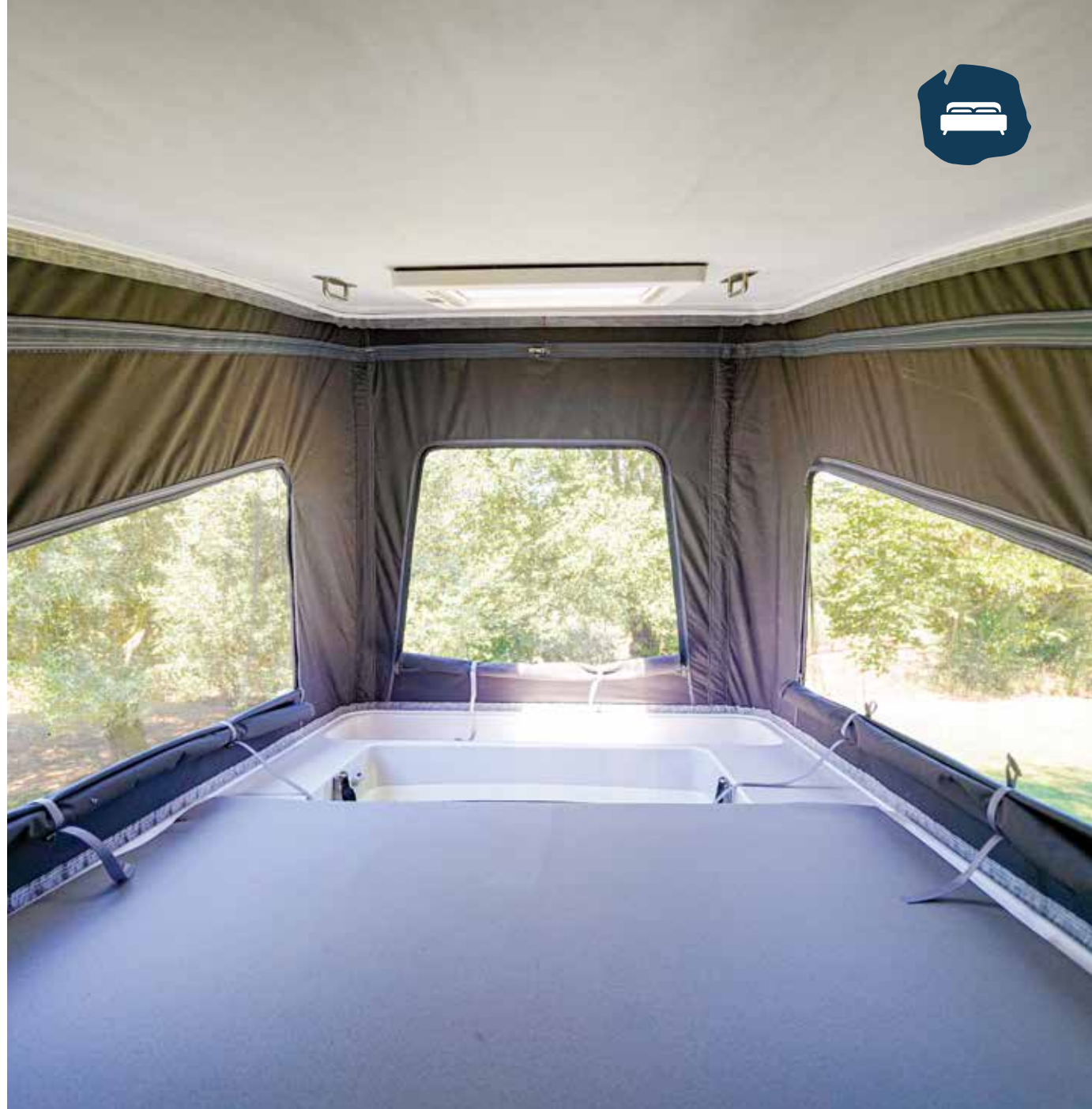
Feel the natural wood under your feet, a resistant feature which will last through many incredible adventures .





Our waterproof door, the bathroom is also fitted with a folding window for perfect ventilation.







RELAX!

The Big Sur is fitted with an XXL twin bed, 1.60 m x 1.95 m, it is built in the length of the vehicle and will delight the most demanding customers. Its stowage capacity is supplemented by a large wardrobe and by overhead cabinets in the rest area. You will also find a second electric-operated bed that allows you to accommodate two additional guests. Its intelligent design allows it to be used daily or for special occasions.

As an option you can also request a 2 place roof-top pop-up bed.

In the storage area you will find practical high-quality chairs as well as space for your skis. Ask us about additional external storage options, we have developed specific luggage racks for the roof and for the rear doors suitable for offroad use.





TECHNICAL DATA

MEASUREMENTS

Length: 6.83 m.
Width: 2.04 m.
Height: 2.65 m.
MMTA: 3500 /4100 Kg.



ENGINE

2.0 TDI 180 CV

Permanent 4x4 mechanical traction

Automatic locking rear differential

DSG transmission - 8 speed

Available in 4x2

VEHICLE EQUIPMENT

Carplay

Rearview camera

Front led lights

Rotating front seats

Heating front seats

Steering wheel commands for cruise control

Heated leather steering wheel

Man / Volkswagen option



COLOURS



Deep Black Pearl



Indian Grey



Reflex Silver



Candy White



Luminous Orange



Cherry Red

CAMPERVAN EQUIPMENT

4-seater homologation
Water deposit: 20/160 liters
Solar panel: Mono 180 W MTTP
Heating: Truma Combi D6
Fridge: 90-liter compressor
Electrical upper bed
TV fittings
USB and 220 V sockets
Hot water installation
Gas cooker with 2 burners
Light dimmer in sleeping area

EXTRAS

Pop up roof
Lower protectors
Suspension height kit
Dual-zone climate control
Off-road tyres
Rear-door spare wheel rack
Snorkel
Additional LAZER lights
Motorcycle rack - 300 Kg
Bicycle rack
Isofix for 2 in rear seating
...



The equipment shown in the images is not contractual, Julia Camper reserves the right to change the configurations without prior notice



JULIÀ
CAMPER

Oficinas - Carretera de Palamós 191, Producción- C/ Areny 48
17460 Celrà-Girona-Spain
Tel: 972 49 49 08
info@juliacamper.com - www.juliacamper.com

BIG SUR 4x4